

JBL702A Series

Universal Input, 20 Watt Output



Li-ion/Polymer Chargers

2 Year Warranty

- 100-240VAC Universal Input
- Optimizes Li-ion/Polymer Battery Life
- 4V to 21V Output Models, up to 21W
- Dual-color LED Indicator
- Modified and Custom Designs Available
- Impact-Resistant Polycarbonate Enclosure
- Meets safety agency requirements



International Safety Standard Approvals



Specifications

All Specifications are typical at nominal input, full load at 25°C unless otherwise stated.

AC Input	100-240VAC, +/-10%, 47-63 Hz, 1Ø.	Topology	Switching – Battery Charger
Input Current	1.0A maximum, at 110Vac	Approvals and Safety Standards	EN/IEC/CSA/UL60950-1, EMC: EN55022/55024/61000
Inrush Current peak.	Inrush limiting provided – 150A	Dielectric Withstand	Input-Output: 3000Vac, Input-GND: 1500Vac, Output-GND: 500Vdc
Input Fuse	Dual Internal Primary Current Fuse: 250Vac, 1A	Operating Temperature	0° to 40°C, no derating
Output Voltage	See chart.	Storage Temperature	-30 to +85°C.
Output Power	See chart	Relative Humidity	5% to 95%, non-condensing
Minimum Load	Not required.	Altitude	0 to 10,000 ft.
Battery Type:	Li-ion/Polymer	MTBF	>61,000 hours (calculated)
Charging Method:	Constant current and constant voltage.	Case Dimensions:	4.49”(L) x 2.36”(W) x 1.38(H)”, 114mm(L) x 60mm(W) x 35mm(H)
Overload Protection	Hiccup Mode	Case Material:	Black 94V0 Polycarbonate
Short Circuit Protection	Hiccup Mode	Output Connections:	Cable: 1500mm, 18AWG, 2 conductor. Connector: 1.35 x 3.5mm barrel type, center contact (+).

Pre-Charge Mode Operation:

- Threshold Voltage: <10.0 +/-0.2V
- Pre-charge Current = Fast charge current
- Pre-charge Cycle 10 Times, 10sec ON / 2sec OFF
- Fast charge Mode change When the battery voltage is more than 5.0V (Threshold voltage), change to the Fast charge Mode.
- Pre-charge Failure check After 10 cycle, check the battery voltage is less than 5.0V, show the flickering LED; more than 5.0V, change to the Fast charge Mode.

LED Indicators:

- | | |
|--------------------------|---|
| LED Off: | Battery Unloaded, output shorted. |
| R/G/A 0.5 second on/off: | Power switch ON, or reset microcontroller. |
| Red LED On: | Fast Charge, pre-charge |
| Green LED On: | Fully Charged or Trickle Charge |
| Flickering Red LED: | Error (Output overvoltage or undervoltage. LED error blink rate is 500 mSec on, 500 mSec off. |

JBL702A Series

Universal Input, 20 Watt Output

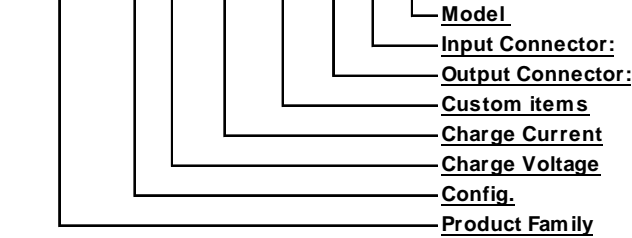
Li-ion/Polymer Chargers



2 Year Warranty

Model Number Key

JBL702 A 06 500 00 03 F J



"J" = Standard. "02" and higher indicates a modified model.
 "F" = IEC320 C14 grounded
 "03" = 2.5mm Barrel Type connector, center (+). Other options available.
 "00" = Standard Model
 "200" = 2.00A
 "08" = 8.4V, etc.
 "A" = Original Design Configuration

Model Number	Threshold Volts (V)	Fast Charge Current (A)	Switchover Current (A)	Fast Charge Voltage (V)	Overvoltage Protection (V)	Max Watts
JBL702A082000003FK	5.0V	2.0A	0.450A	8.4V	8.8+/- 0.05V	17.0W
JBL702A161200203FC	10.0V	1.2A	0.240A	16.8V	17.6+/-0.2V	20.0W

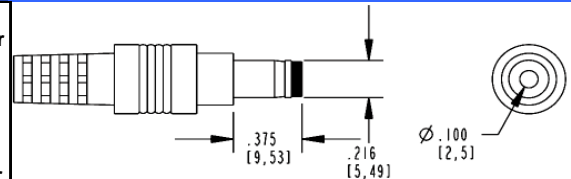
Input Receptacle

"F" = IEC320
C14
Class I -
Grounded

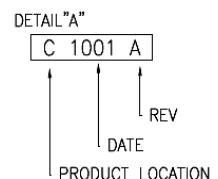
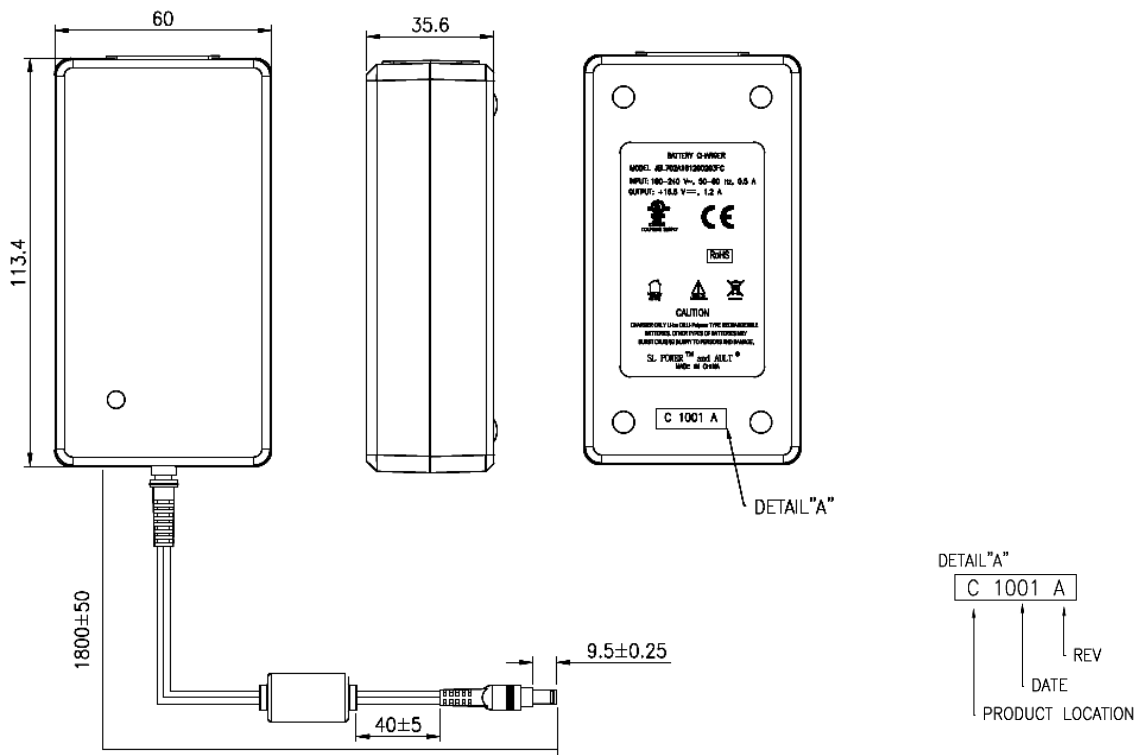


Output Connector

Notes: 1. Ault #3 Connector, center contact
 2. Connector is Switchcraft 760 plug or equivalent. Suggested mating connector is Switchcraft 712A or equivalent.
 3. Other connector options are available. Contact your local SL Power Representative for details.



Outline Drawing



Data Sheet © 2014 SL Power Electronics Corp. The information and specifications contained herein are believed to be correct at the time of publication. Rev. 9-20-2014
 However, SL Power accepts no responsibility for consequences arising from reproduction errors or inaccuracies. Specifications are subject to change without notice.