

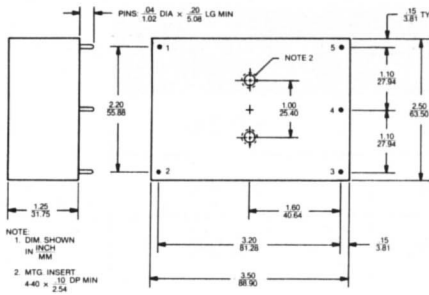
**125 SERIES  
SINGLE**

**CASE B**

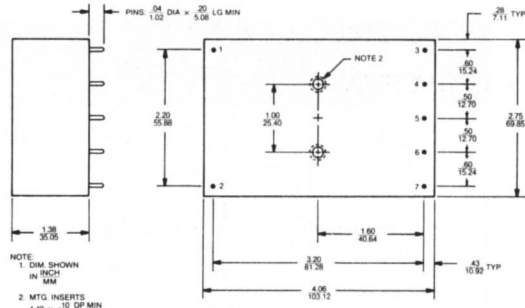
**MECHANICAL SPECIFICATIONS  
P.C. CARD MOUNTABLE MODELS**

**225 SERIES, 325 SERIES  
DUAL & TRIPLE**

**CASE H**

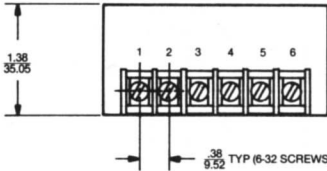


MODEL	PIN	OUTPUT
125	1	AC IN
	3	+5 VDC/5.0 A
	4	COM
	5	N.C.
106	1	AC IN
	3	+5 VDC/2.8 A
	4	COM
	5	N.C.
127	1	AC IN
	3	+12 VDC/2.0 A
	4	COM
	5	N.C.
128	1	AC IN
	3	+15 VDC/1.7 A
	4	COM
	5	N.C.

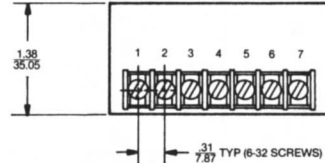
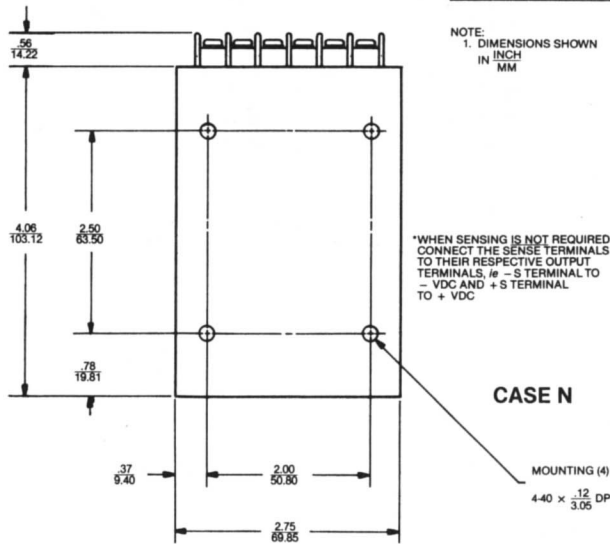


MODEL	PIN	OUTPUT
225	1	AC IN
226	2	AC IN
227	3	- VDC
228	4	N.C.
	5	COM
	6	N.C.
	7	+ VDC
325	1	AC IN
326	2	AC IN
	3	- VDC
	4	+5V COM
	5	COM
	6	+5 VDC
	7	+ VDC

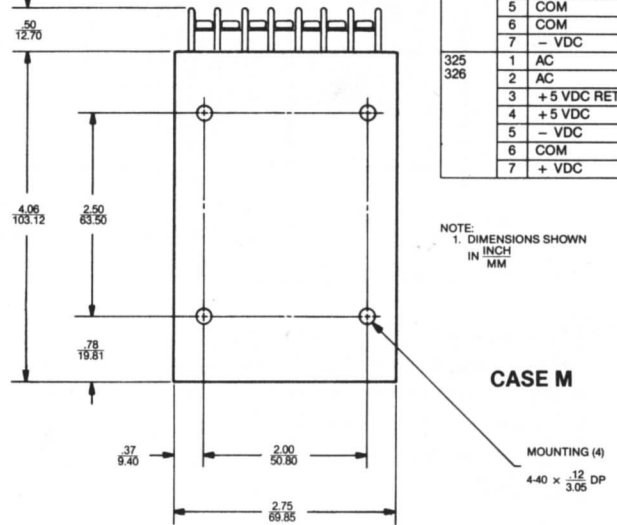
**CHASSIS MOUNTABLE MODELS**



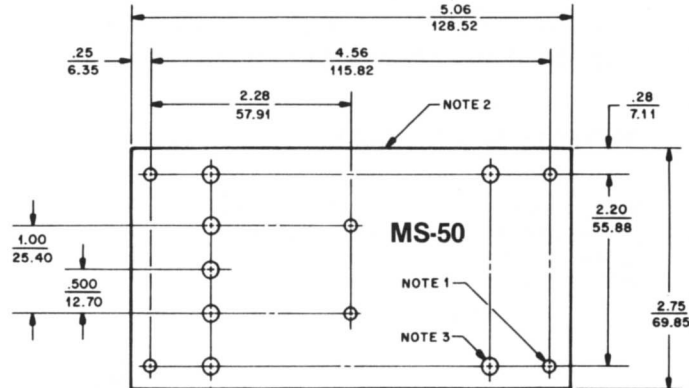
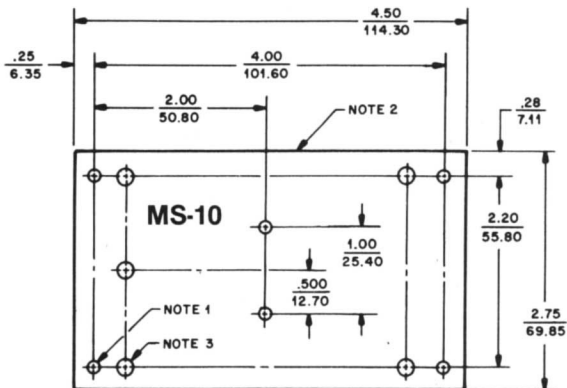
MODEL	PIN	OUTPUT
125	1	AC
126	2	AC
127	3*	- SENSE
	4	- VDC
128	5	+ VDC
	6*	+ SENSE



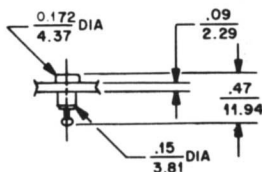
MODEL	PIN	OUTPUT
225	1	AC
226	2	AC
227	3	(N.C.)
228	4	+ VDC
	5	COM
	6	COM
	7	- VDC
325	1	AC
326	2	AC
	3	+5 VDC RET
	4	+5 VDC
	5	- VDC
	6	COM
	7	+ VDC



**OPTIONAL SOCKET CONFIGURATIONS**



TYPICAL SOCKET DIMENSIONS



NOTE:

1. MOUNTING HOLES:  $\frac{14}{3.56}$  DIA
2. G10 BOARD THICKNESS:  $\frac{.09}{2.29}$
3. RECEPTACLES EXTEND  $\frac{.31}{7.87}$

BELOW BOTTOM SURFACE OF SOCKET BOARD

4. DIMENSIONS SHOWN IN INCH MM