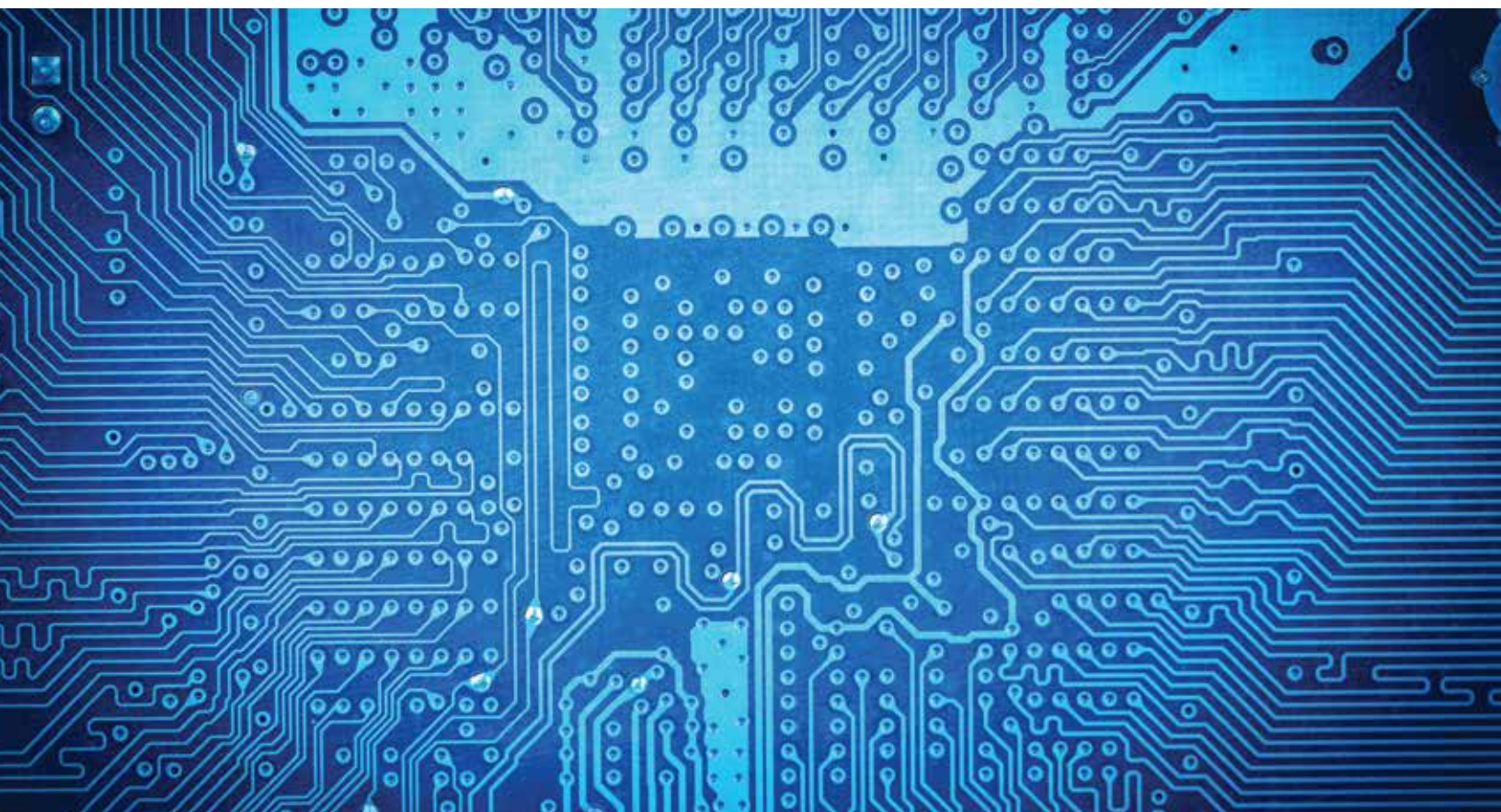


International Linear + Fuses

AN-112

SL Power Application Note 8/2003





INTERNATIONAL A + SERIES MAXIMUM RECOMMENDED FUSE VALUES Use Slow-Blow Time Delay Fuses

| MODEL | 100V TAP | 120V TAP | 215V TAP | 230-240V TAP |
|---------------|----------|----------|----------|--------------|
| CP131-A+ | 2.5A | 2.0A | 1.25A | 1.0A |
| CP197-A+ | 7.0A | 6.0A | 4.0A | 3.0A |
| CP206-A+ | 2.5A | 2.0A | 1.25A | 1.25A |
| CP323-A+ | 1.75A | 1.5A | 0.75A | 0.75A |
| CP379-A+ | 4.0A | 3.0A | 1.5A | 1.5A |
| CP498-A+ | 3.0A | 2.5A | 1.5A | 1.5A |
| CP510-A+ | 2.0A | 2.0A | 1.0A | 1.0A |
| F15-15-A+ | 6.0A | 5.0A | 3.0A | 3.0A |
| F24-12-A+ | 7.0A | 6.0A | 4.0A | 3.0A |
| F48-6-A+ | 7.0A | 6.0A | 3.0A | 3.0A |
| F5-25-0V-A+ | 4.0A | 4.0A | 2.0A | 2.0A |
| G5-35-0V-A+ | 5.0A | 5.0A | 2.5A | 2.5A |
| HA15-0.9-A+ | 0.5A | 0.5A | 0.25A | 0.25A |
| HA2-1.5-A+ | 0.5A | 0.5A | 0.25A | 0.25A |
| HA24-0.5-A+ | 0.5A | 0.5A | 0.25A | 0.25A |
| HA5-1.5-0V-A+ | 0.5A | 0.5A | 0.25A | 0.25A |
| HAA15-0.8-A+ | 1.0A | 0.75A | 0.4A | 0.4A |
| HAA24-0.6-A+ | 1.0A | 0.75A | 0.4A | 0.4A |
| HAA5-1.5-A+ | 0.6A | 0.5A | 0.25A | 0.25A |
| HAA512-A+ | 0.75A | 0.75A | 0.4A | 0.4A |
| HAA524-A+ | 0.75A | 0.75A | 0.4A | 0.4A |
| HAD12-0.4-A+ | 0.5A | 0.5A | 0.25A | 0.25A |
| HAD1 5-0.4-A+ | 0.5A | 0.5A | 0.25A | 0.25A |
| HB12-1.7-A+ | 0.75A | 0.6A | 0.4A | 0.4A |
| HB15-1.5-A+ | 0.75A | 0.75A | 0.4A | 0.4A |
| HB2-3-A+ | 0.5A | 0.5A | 0.25A | 0.25A |
| HB24-1.2-A+ | 0.75A | 0.75A | 0.4A | 0.4A |
| HB28-1-A+ | 0.75A | 0.75A | 0.4A | 0.4A |
| HB48-0.5-A+ | 0.75A | 0.6A | 0.4A | 0.4A |
| HB5-3-0V-A+ | 0.75A | 0.6A | 0.4A | 0.4A |
| HBAA-4W-A+ | 1.5A | 1.25A | 0.75A | 0.75A |
| HBB15-1.5-A+ | 1.5A | 1.25A | 0.75A | 0.75A |
| HBB5-3-0V-A+ | 1.0A | 1.0A | 0.6A | 0.6A |
| HBB512-A+ | 1.25A | 1.0A | 0.75A | 0.6A |
| HBB524-A+ | 1.25A | 1.25A | 0.75A | 0.6A |
| HC12-3.4-A+ | 1.25A | 1.0A | 0.6A | 0.6A |



| MODEL | 100V TAP | 120V TAP | 215V TAP | 230-240V TAP |
|--------------|----------|----------|----------|--------------|
| HC15-3-A+ | 1.5A | 1.25A | 0.75A | 0.75 |
| HC2-6-A+ | 1.0A | 1.0A | 0.5A | 0.5A |
| HC24-2.4-A+ | 1.5A | 1.25A | 0.75A | 0.75 |
| HC28-2-A+ | 1.5A | 1.25A | 0.75A | 0.75 |
| HC48-1-A+ | 1.25A | 1.0A | 0.6A | 0.6A |
| HC5-6-0V-A+ | 1.25A | 1.0A | 0.6A | 0.6A |
| HCAA-60W-A+ | 3.0A | 3.0A | 1.5A | 1.5A |
| HCBB-105W-A+ | 3.0A | 2.5A | 1.25A | 1.25A |
| HCBB-75W-A+ | 2.5A | 2.0A | 1.25A | 1.25A |
| HCC15-3-A+ | 2.5A | 2.0A | 1.0A | 1.0A |
| HCC5-6-0V-A+ | 2.0A | 1.75A | 1.0A | 1.0A |
| HCC512-A+ | 2.5A | 2.5A | 1.5A | 1.25A |
| HCC524-A+ | 2.5A | 2.0A | 1.25A | 1.25A |
| HD12-6.8-A+ | 3.0A | 2.5A | 1.5A | 1.5A |
| HD15-6-A+ | 3.0A | 2.5A | 1.5A | 1.5A |
| HD2-12-A+ | 1.5A | 1.5A | 1.0A | 1.0A |
| HD24-4.8-A+ | 3.0A | 2.5A | 1.5A | 1.5A |
| HD28-4-A+ | 2.5A | 2.5A | 1.5A | 1.25A |
| HD48-3-A+ | 3.0A | 3.0A | 1.5A | 1.5A |
| HD5-12-0V-A+ | 2.5A | 2.0A | 1.0A | 1.0A |
| HDBB-105W-A+ | 3.0A | 2.5A | 1.5A | 1.5A |
| HDCC-15W-A+ | 5.0A | 4.0A | 2.25A | 2.0A |
| HDD15-5-A+ | 4.0A | 3.0A | 1.75A | 1.5A |
| HE12-10.2-A+ | 4.0A | 3.0A | 1.5A | 1.5A |
| HE15-9-A+ | 4.0A | 4.0A | 1.75A | 1.75A |
| HE2-18-A+ | 2.25A | 2.0A | 1.0A | 1.0A |
| HE24-7.2-A+ | 4.0A | 4.0A | 2.0A | 1.75A |
| HE28-6-A+ | 4.0A | 3.0A | 2.0A | 1.5A |
| HE48-4-A+ | 4.0A | 4.0A | 2.0A | 2.0A |
| HE5-18-0V-A+ | 3.0A | 2.5A | 1.5A | 1.5A |
| HN12-5.1-A+ | 1.75A | 1.5A | 1.0A | 1.0A |
| HN15-4.5-A+ | 1.75A | 1.5A | 1.0A | 1.0A |
| HN2-9-A+ | 2.0A | 1.75A | 1.0A | 1.0A |
| HN24-3.6-A+ | 2.5A | 2.0A | 1.0A | 1.0A |
| HN28-3-A+ | 2.0A | 1.75A | 1.0A | 1.0A |
| HN5-9-0V-A+ | 1.75A | 1.5A | 0.75A | 0.75A |
| HTAA-16W-A+ | 0.75A | 0.75A | 0.4A | 0.4A |



RECOMMENDED FUSE VALUES FOR M SERIES MEDICAL LINEARS SLOW-BLOW TIME DELAY FUSES

| MODEL | 100V TAP | 120V TAP | 215V TAP | 230-240V TAP |
|-------------|----------|----------|----------|--------------|
| ML5-1-0V-A | 0.25A | 0.25A | 0.125A | 0.125A |
| MB5-3-0V-A | 0.75A | 0.6A | 0.4A | 0.3A |
| MC5-6-0V-A | 1.25A | 1A | 0.6A | 0.6A |
| MD5-12-0V-A | 2.5A | 2A | 1.25A | 1A |
| ML12-0.5-A | 0.25A | 0.25A | 0.125A | 0.125A |
| MB12-1.7-A | 0.75A | 0.6A | 0.4A | 0.4A |
| MC12-3.4-A | 1.5A | 1.25A | 0.75A | 0.6A |
| MD12-6.8-A | 3A | 2.5A | 1.5A | 1.5A |
| ML15-0.4-A | 0.25A | 0.25A | 0.125A | 0.125A |
| MB15-1.5-A | 0.75A | 0.75A | 0.4A | 0.4A |
| MC15-3-A | 1.5A | 1.25A | 0.75A | 0.75A |
| MD15-6-A | 3A | 2.5A | 1.5A | 1.5A |
| ML24-.28-A | 0.25A | 0.25A | 0.125A | 0.125A |
| MB24-1.2-A | 0.8A | 0.75A | 0.4A | 0.4A |
| MC24-2.4-A | 1.5A | 1.5A | 0.75A | 0.75A |
| MD24-4.8-A | 3A | 3A | 1.5A | 1.5A |
| MB28-1-A | 0.75A | 0.75A | 0.4A | 0.4A |
| MC28-2-A | 1.5A | 1.5A | 0.75A | 0.75A |
| MD28-4-A | 3A | 2.5A | 1.5A | 1.25A |
| MLL12-.25-A | 0.25A | 0.25A | 0.125A | 0.125A |
| MLL15-.2-A | 0.25A | 0.25A | 0.125A | 0.125A |
| MAA15-.8-A | 1A | 0.75A | 0.4A | 0.4A |
| MBB15-1.5-A | 1.5A | 1.5A | 0.75A | 0.75A |
| MCC15-3-A | 3A | 3A | 1.5A | 1.5A |
| MAA512-A | 0.75A | 0.75A | 0.4A | 0.4A |
| MBB512-A | 1.5A | 1.25A | 0.75A | 0.6A |
| MCC512-A | 3A | 2.5A | 1.5A | 1.25A |
| MAA524-A | 0.75A | 0.75A | 0.4A | 0.4A |
| MBB524-A | 1.5A | 1.25A | 0.75A | 0.6A |
| MCC524-A | 3A | 2.5A | 1.5A | 1.25A |
| MTLL-5W-A | 0.25A | 0.25A | 0.125A | 0.125A |
| MTAA-16W-A | 0.75A | 0.75A | 0.4A | 0.4A |
| MBAA-4W-A | 1.5A | 1.5A | 0.75A | 0.75A |
| MCAA-6W-A | 3A | 3A | 1.5A | 1.5A |
| MCCB-75W-A | 2.5A | 2A | 1.25A | 1.25A |